

GERBER HOMES



THE ASHTON

2,751 Sq. Ft.

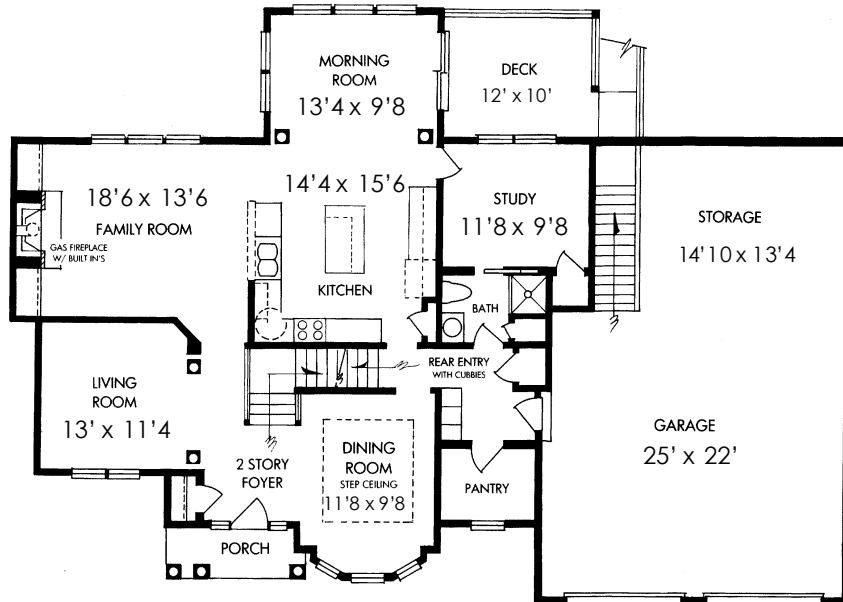
(Plus 304 SF Bonus Rm, Partially Finished Bsmt 800 SF)

FIRST FLOOR

1420 SF

W-66'4 (+ 2' w/ FP)

D-46'



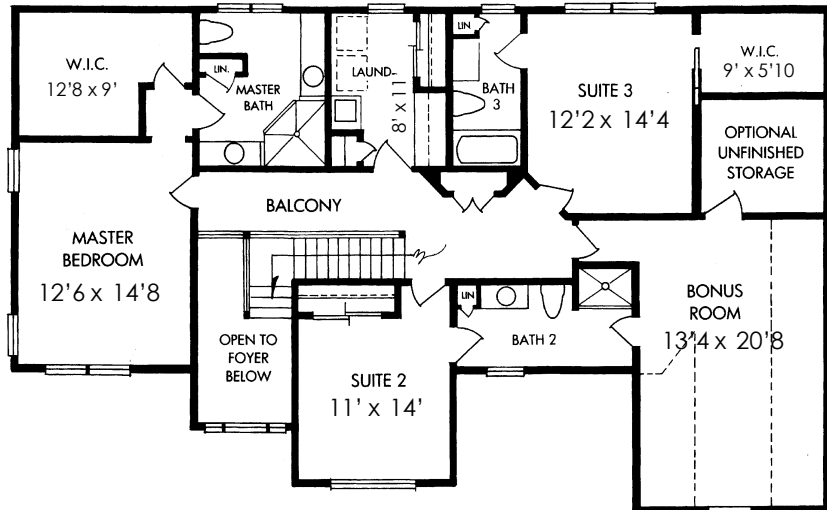
SECOND FLOOR

1331 SF

(Plus 304 SF Bonus)

Shown w/ the following Opt Items...

- 9' & Tray ceiling s
- Fireplace
- Built-Ins
- Finished Bonus Rm
- Finished Basement
- Gar/BSMT Entrance
- Laundry Sink / Cabt's
- Stone Veneer
- Deck



This sheet is for illustrative purposes only and is not part of a legal contract. Dimensions shown are approximate and may vary from completed structure.

GERBER HOMES

OPTIONAL

800 SF Partially Finished Basement

